

# SAFETY REPORTS

October 03, 2016

Steve Smith  
Safety Director  
Best Company  
1234 Main Street  
Kansas City, MO 64555

Re: General Industry Safety Survey  
Omaha, NE

Steve,

This report is in follow-up to the safety survey completed on October 02, 2016. The purpose of the survey was to identify potential safety hazards and/or OSHA violations. Tim Miller is the contact person at this location.

Attached, is a list of safety observations and recommendations based on conditions present at the time of my visit. If you have any questions or require additional information after reading this report, please don't hesitate to contact me.

Sincerely,

*John Doe*

John Doe  
President/Owner  
Safety-Reports, Inc.  
Phone: (402) 403-6575  
Email: johndoe1963@cox.net

CC: Bill Johnson  
Tom Jackson

*Observations and recommendations are purely advisory and based on practices and conditions observed and information provided at the time of this survey. They are not intended to include every loss or accident potential. It's the client's responsibility to make further observations and take whatever action that may be necessary to prevent losses, enforce safety procedures and eliminate hazardous conditions so as to comply with any federal, state, or local law, rule or regulation concerning safety and health.*

## General Industry Report

Inspection Date: October 02, 2016  
 Completed for: Best Company  
 Report Name: General Industry  
 Location: Omaha, NE  
 Contact: Tim Miller, Shop Manager  
 Score: 66%  
 Scope of Work: Monthly Safety Walk-through

Categories with a checkmark in the "S" column are Satisfactory. Categories with a checkmark in the "U" column are Unsatisfactory and require additional attention (see notes). Categories not checked are considered not applicable or were not observed.

#	Category	S	U	#	Category	S	U	#	Category	S	U
1	Aisles/Walkways			17	Housekeeping		✓	33	Spraying Operations		
2	Behaviors			18	Ladders (Fixed)			34	Stairs and Stairways	✓	
3	Bloodborne Pathogens			19	Ladders (Portable)		✓	35	Storage		✓
4	Compressed Air		✓	20	Loading Dock Safety			36	Tire Inflation		
5	Compressed Gas Cylinders		✓	21	Lockout/Tagout			37	Tools (Hand & Power)		✓
6	Confined Spaces			22	Machine Guards (General)		✓	38	Walking-Working Surfaces		
7	Cranes/Rigging		✓	23	Machine Guards (Presses)			39	Welding, Cutting and Brazing		✓
8	Electrical Safety		✓	24	Machine Guards (Woodworking)			40	Written Programs/Policies		
9	Emergency Action Plan			25	Medical Services/First Aid		✓	41	Other/Misc.		
10	Exits/Egress		✓	26	Personal Protective Equipment			42	Hearing Protection		
11	Fire Safety	✓		27	Postings/Signs	✓		43	PSM		
12	Flammable Liquids		✓	28	Recordkeeping (Injury/Illness)	✓		44	Merchandising		
13	Forklifts (Material Handling)			29	Respirators			45			
14	Grinders (Bench/Pedestal)		✓	30	Safety Training			46			
15	Hazard Communication		✓	31	Scaffolds			47			
16	Health Hazards			32	Silica Exposure			48			

#	Category	Observations:
4	Compressed Air	Not all air nozzles are equipped with relief ports and/or relief ports are blocked (1910.242) (See Photo)
5	Compressed Gas Cylinders	Not all cylinders are secured to prevent tipping (1910.101) (See Photo) Note: Cylinders need to be secured to prevent tipping in outside storage area.
5	Compressed Gas Cylinders	Not all valve caps are replaced when cylinders are not in use (1910.101) (See Photo) Note: Safety caps are not replaced on all stored cylinders

7	Cranes/Rigging	The rated load of each hoist is not marked and/or clearly legible from the ground or floor (1910.179) (See Photo)
7	Cranes/Rigging	Not all lifting hooks have functional safety latches (1910.179) (See Photo)
7	Cranes/Rigging	Slings are not maintained in good condition and/or they contain kinks or knots (1910.184) (See Photo) <i>Note: Severely damaged sling should be removed from service</i>
8	Electrical Safety	Access to breaker panels, disconnects, etc. is obstructed (i.e. proper clearance not maintained) and/or the area around transformers and other electrical equipment is not kept clear. (1910.303) (See Photo)
10	Exits/Egress	The direction of travel to exits is not marked when not apparent (1910.37)
10	Exits/Egress	Emergency lights are not provided and/or not all functional (1910.37) (See Photo) <i>Note: Need to inspect all emergency lights. At least two were found to not work when test button was depressed.</i>
12	Flammable Liquids	More than 25 gallons of Category 1 flammable liquids are stored outside of approved storage cabinet or storage room (1910.106) (See Photo)
14	Grinders (Bench/Pedestal)	The tongue guard is not adjusted to within 1/4 inch of wheel (1910.215) (See Photo)
14	Grinders (Bench/Pedestal)	Bench/pedestal grinders are not all permanently mounted (1910.212) (See Photo)
15	Hazard Communication	Not all hazardous chemicals are properly labeled (1910.1200) (See Photo)
17	Housekeeping	Not all work areas are kept clean and orderly (1910.141) (See Photo)
19	Ladders (Portable)	Step ladder(s) found with missing or damaged non-slip safety feet (1910.26) (See Photo)
22	Machine Guards (General)	Not all point-of-operation hazards are properly guarded (1910.212) (See Photo)
22	Machine Guards (General)	Rotating parts hazards are not all properly guarded or shielded (1910.212) (See Photo)
25	Medical Services/First Aid	Issues relating to Medical/First Aid standards (1910.151) were identified (see notes/photos for detail) (See Photo) <i>Note: Saline rinse bottles need to be inspected to ensure they are current/not expired.</i>
35	Storage	Materials are not all stored/stacked safely (1910.176) (See Photo)
37	Tools (Hand & Power)	Tools are not all inspected and maintained in good condition (1910.242) (See Photo)
37	Tools (Hand & Power)	All angle grinders are not properly guarded (1910.243) (See Photo)
39	Welding, Cutting and Brazing	Adequate ventilation is not provided for welding operations (1910.252) <i>Note: Ventilation system in Maintenance Shop is suspect at best. Need IH to conduct testing to ensure proper ventilation is provided.</i>

---

### Closing Comments:

Several issues to address. Spoke to Tim regarding the results of this audit and he assured me steps will be taken to address deficiencies noted.

## Recommendations:

### 1) Compressed Air

- *Only use air nozzles equipped with relief ports to discharge sufficient air to reduce the air pressure at the nozzle tip to less than 30 p.s.i. [reference 1910.242(b)]. [View OSHA Standard](#)*
  - Responsible Party: Fabrication Manager

### 2) Compressed Gas Cylinders

- *Take appropriate steps to secure compressed gas cylinders in an upright position to prevent them from tipping over in accordance with Compressed Gas Association Pamphlet P-1-1965 [incorporated by reference in Sec. 1910.6]. [View OSHA Standard](#)*
  - Note: Cylinders need to be secured to prevent tipping in outside storage area.
  - 
  - Severity Rating: Moderate
  - Responsible Party: Maintenance Manager
- *Take steps to ensure all valve caps are replaced on compressed gas cylinders when not in use in accordance with Compressed Gas Association Pamphlet P-1-1965 [incorporated by reference as specified in Sec. 1910.6]. [View OSHA Standard](#)*
  - Note: Safety caps are not replaced on all stored cylinders
  - 
  - Severity Rating: Moderate
  - Responsible Party: Fabrication Manager

### 3) Cranes/Rigging

- *Mark the rated load of the crane on each side of the crane and be sure it is clearly legible from the ground or floor [reference 1910.179(b)(5)]. [View OSHA Standard](#)*
- *Visually inspect hooks daily for defects (i.e. twisted, pitted, throat opening too wide, broken/missing safety latch, etc.) and repair and/or replace hooks when defects are found [reference 1910.179(j)(2)(iii)]. [View OSHA Standard](#)*
  - Severity Rating: Moderate
  - Responsible Party: Fabrication Manager
- *Damaged or defective slings shall not be used. Additionally, slings shall not be shortened with knots or bolts or other makeshift devices and sling legs shall not be kinked. [reference 1910.184(c)(1),(2),&(3)] [View OSHA Standard](#)*
  - Note: Severely damaged sling should be removed from service
  - 
  - Severity Rating: Advisory
  - Responsible Party: Maintenance Manager

### 4) Electrical Safety

- *Take steps (i.e. paint lines on floor, use railing, cones, etc.) to maintain sufficient access and working space (min. 30 inches wide by 36 inches deep) in front of all electric equipment including breaker panels, disconnect switches, transformers, etc. [reference 1910.303(g)(1)]. [View OSHA Standard](#)*
  - Responsible Party: Maintenance Manager

#### 5) Exits/Egress

- *If the direction of travel to the exit or exit discharge is not immediately apparent, post signs along the exit routes indicating the direction of travel to the nearest exit and exit discharge [reference 1910.37(b)(4)]. [View OSHA Standard](#)*
  - Responsible Party: Maintenance Manager
- *Install emergency lighting as needed to ensure adequate lighting of all exit routes and doors during a power failure. Also, lighting should be tested monthly to ensure batteries are not dead or bulbs burned out. Repair/replace as needed [reference 1910.37(b)(1)]. [View OSHA Standard](#)*
  - Note: Need to inspect all emergency lights. At least two were found to not work when test button was depressed.
  - Responsible Party: Maintenance Manager

#### 6) Flammable Liquids

- *The quantity of Category 1 flammable liquids that may be located outside of an inside storage room or storage cabinet in a building or in any one fire area of a building shall not exceed 25 gallons. [reference 1910.106(e)(2)(ii)(b)(1)] [View OSHA Standard](#)*
  - Responsible Party: Maintenance Manager

#### 7) Grinders (Bench/Pedestal)

- *Adjust (or install if missing) the tongue guard on grinders to within one-fourth inch of the wheel [reference 1910.215(b)(9)]. [View OSHA Standard](#)*
  - Severity Rating: Moderate
  - Responsible Party: Maintenance Manager
- *Make sure all equipment (i.e. bench or pedestal grinders) designed for a fixed location are securely anchored to prevent walking or moving [reference 1910.212(b)]. [View OSHA Standard](#)*
  - Severity Rating: Advisory
  - Responsible Party: Maintenance Manager

#### 8) Hazard Communication

- *Take steps to ensure that all hazardous chemical containers (original and secondary containers) are properly labeled. Labels must not be removed or defaced [reference 1910.1200(b)(3)(i)]. [View OSHA Standard](#)*
  - Responsible Party: Maintenance Manager

#### 9) Housekeeping

- *Take steps to ensure all places of employment are kept clean and organized to the extent that the nature of the work allows [reference 1910.141(a)(3)(i)]. [View OSHA Standard](#)*

#### 10) Ladders (Portable)

- *Immediately remove from service any step ladder that has damaged or missing non-slip feet [reference 1910.26(a)(3)(vii)]. [View OSHA Standard](#)*

#### 11) Machine Guards (General)

- *Install safeguards at the point of operation of machines to prevent employees from placing a body part in the danger zone during the operating cycle [reference 1910.212(a)(3)(ii)]. [View OSHA Standard](#)*
  - Responsible Party: Maintenance Manager
- *Install guards or shields on machines to prevent placing a body part in the rotating parts hazard of a machine (i.e. chuck guard or shield on drill presses or lathes, fixed guard on rotating shaft, etc.) [reference 1910.212(a)(3)(ii)]. [View OSHA Standard](#)*
  - Responsible Party: Maintenance Manager

#### 12) Medical Services/First Aid

- *Review OSHA regulations on Medical Services/First Aid (1910.151) and adhere to applicable requirements in the standard. Reference comments, notes and/or photo(s) for details. [View OSHA Standard](#)*
  - Note: Saline rinse bottles need to be inspected to ensure they are current/not expired.
  - Severity Rating: Advisory
  - Responsible Party: Warehouse Manager

#### 13) Storage

- *Materials in storage should be stacked, blocked, interlocked and limited in height so that they are stable and secure against sliding or collapse. Avoid leaning items on end unless secured to prevent them from falling over [reference 1910.176(b)]. [View OSHA Standard](#)*
  - Responsible Party: Warehouse Manager

#### 14) Tools (Hand & Power)

- *Require employees to inspect and maintain tools and equipment in a safe condition. Tag and remove from service any damaged or defective tools until repairs can be made or discard if repairs are not possible [reference 1910.242(a)]. [View OSHA Standard](#)*
  - Responsible Party: Fabrication Manager, Maintenance Manager
- *Require use of safety guards on portable angle grinders and the guard must be located between the operator and the wheel during use [reference 1910.243(c)(3)]. [View OSHA Standard](#)*
  - Responsible Party: Fabrication Manager, Maintenance Manager

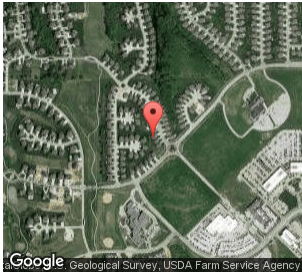
#### 15) Welding, Cutting and Brazing

- *Provide local exhaust or general ventilating systems to keep the amount of welding fumes below the maximum allowable concentration as specified in 1910.1000 [reference 1910.252(c)(1)(iii)]. [View OSHA Standard](#)*
  - Note: Ventilation system in Maintenance Shop is suspect at best. Need IH to conduct testing to ensure proper ventilation is provided.
  - Responsible Party: Maintenance Manager

Submitted by:


John Doe  
President/Owner  
Safety-Reports, Inc.  
(402) 403-6575  
johndoe1963@cox.net

*Observations and recommendations are purely advisory and based on practices and conditions observed and information provided at the time of this survey. They are not intended to include every loss or accident potential. It's the client's responsibility to make further observations and take whatever action that may be necessary to prevent losses, enforce safety procedures and eliminate hazardous conditions so as to comply with any federal, state, or local law, rule or regulation concerning safety and health.*



**Geo-Tag Information:**  
**Latitude:** 41.268366  
**Longitude:** -96.203879  
**Date:** 10/02/2016  
**Time:** 03:53 PM (central)

Inspection/report/audit verified by:

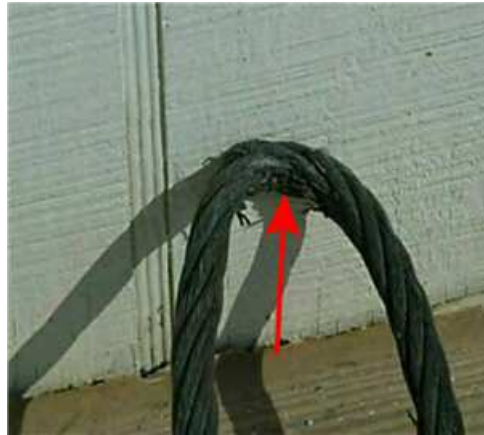
x   
\_\_\_\_\_  
Sunday, October 02, 2016 15:52:13 PM (central)

**Photo(s):**

Safety cap missing



Damaged sling



Self-adjusting guard is by-passed



Safety latch is broken on hook in Fab shop



Poor housekeeping in warehouse

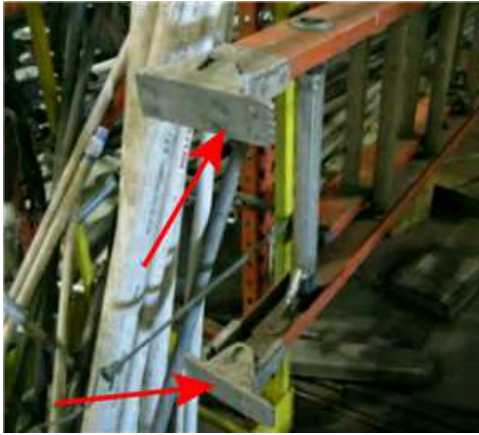


Damaged hook in fab area





Safety feet missing



Load limit on jib crane is not visible



Guard missing on angle grinder



Saline rinse bottles are past expiration



Emergency lights not working when test button is depressed



Blocked electrical panels



Non-approved lifting hook in Fab Shop



Proper Cylinder storage



Housekeeping issue in electrical room



Damaged hammer



Cylinders not secured to prevent tipping



Non approved air nozzle in fab shop



Example of an approved air nozzle



Improper labeling



Improper labeling



Guard missing on grinder





Tongue guard missing



Product stored in warehouse needs to be banded or use shrink wrap when staking on top shelf.



Example of an approved air nozzle



Blocked panels



Flammable not being stored properly



Grinder is not mounted to bench top



Flammable not stored properly



Guards missing on bench grinder



Emergency lights not working above east door in warehouse



Chuck guard needed on drill press



Non approved air nozzle



Damaged shaft on hammer



Guard missing on grinder

