

## SAFETY REPORTS

October 03, 2016

Steve Smith  
Safety Director  
Best Company  
1234 Main Street  
Kansas City, MO 64555

Re: General Industry Safety Survey  
Omaha, NE

Steve,

This report is in follow-up to the safety survey completed on October 02, 2016. The purpose of the survey was to identify potential safety hazards and/or OSHA violations. Tim Miller is the contact person at this location.

Attached, is a list of safety observations and recommendations based on conditions present at the time of my visit. If you have any questions or require additional information after reading this report, please don't hesitate to contact me.

Sincerely,

*John Doe*

John Doe  
President/Owner  
Safety-Reports, Inc.  
Phone: (402) 403-6575  
Email: johndoe1963@cox.net

CC: Bill Johnson  
Tom Jackson

*Observations and recommendations are purely advisory and based on practices and conditions observed and information provided at the time of this survey. They are not intended to include every loss or accident potential. It's the client's responsibility to make further observations and take whatever action that may be necessary to prevent losses, enforce safety procedures and eliminate hazardous conditions so as to comply with any federal, state, or local law, rule or regulation concerning safety and health.*

# General Industry Report

Completed for: Best Company  
Report Name: General Industry  
Location: Omaha, NE  
Contact: Tim Miller, Shop Manager

---

**Inspection Date:** October 02, 2016  
**Scope of Work:** Monthly Safety Walk-through  
**Score:** 66%

## Observations

### Compressed Air

**Observation** Not all air nozzles are equipped with relief ports and/or relief ports are blocked (1910.242)  
**Recommendation** Only use air nozzles equipped with relief ports to discharge sufficient air to reduce the air pressure at the nozzle tip to less than 30 p.s.i. [reference 1910.242(b)]. [View OSHA Standard](#)

Responsible Party: Fabrication Manager

### Photo(s)



Non approved air nozzle in fab shop



Example of an approved air nozzle



Example of an approved air nozzle



Non approved air nozzle

## Compressed Gas Cylinders

**Observation** Not all cylinders are secured to prevent tipping (1910.101)

**Recommendation** Take appropriate steps to secure compressed gas cylinders in an upright position to prevent them from tipping over in accordance with Compressed Gas Association Pamphlet P-1-1965 [incorporated by reference in Sec. 1910.6]. [View OSHA Standard](#)

**Notes:** Cylinders need to be secured to prevent tipping in outside storage area.

Severity Rating: Moderate

Responsible Party: Maintenance Manager

### Photo(s)



Proper Cylinder storage



Cylinders not secured to prevent tipping

**Observation** Not all valve caps are replaced when cylinders are not in use (1910.101)

**Recommendation** Take steps to ensure all valve caps are replaced on compressed gas cylinders when not in use in accordance with Compressed Gas Association Pamphlet P-1-1965 [incorporated by reference as specified in Sec. 1910.6]. [View OSHA Standard](#)

**Notes:** Safety caps are not replaced on all stored cylinders

Severity Rating: Moderate

Responsible Party: Fabrication Manager

### Photo(s)



Safety cap missing

## Cranes/Rigging

**Observation** The rated load of each hoist is not marked and/or clearly legible from the ground or floor (1910.179)

**Recommendation** Mark the rated load of the crane on each side of the crane and be sure it is clearly legible from the ground or floor [reference 1910.179(b)(5)]. [View OSHA Standard](#)

**Photo(s)**



Load limit on jib crane is not visible

**Observation**

**Not all lifting hooks have functional safety latches (1910.179)**

**Recommendation**

*Visually inspect hooks daily for defects (i.e. twisted, pitted, throat opening too wide, broken/missing safety latch, etc.) and repair and/or replace hooks when defects are found [reference 1910.179(j)(2)(iii)]. [View OSHA Standard](#)*

Severity Rating: Moderate

Responsible Party: Fabrication Manager

**Photo(s)**



Safety latch is broken on hook in Fab shop



Damaged hook in fab area



Non-approved lifting hook in Fab Shop

**Observation**

**Slings are not maintained in good condition and/or they contain kinks or knots (1910.184)**

**Recommendation**

*Damaged or defective slings shall not be used. Additionally, slings shall not be shortened with knots or bolts or other makeshift devices and sling legs shall not be kinked. [reference 1910.184(c)(1),(2),&(3)] [View OSHA Standard](#)*

**Notes:** Severely damaged sling should be removed from service

Severity Rating: Advisory

Responsible Party: Maintenance Manager

**Photo(s)**



Damaged sling

## Electrical Safety

**Observation** Access to breaker panels, disconnects, etc. is obstructed (i.e. proper clearance not maintained) and/or the area around transformers and other electrical equipment is not kept clear. (1910.303)

**Recommendation** Take steps (i.e. paint lines on floor, use railing, cones, etc.) to maintain sufficient access and working space (min. 30 inches wide by 36 inches deep) in front of all electric equipment including breaker panels, disconnect switches, transformers, etc. [reference 1910.303(g)(1)]. [View OSHA Standard](#)

Responsible Party: Maintenance Manager

### Photo(s)



Blocked electrical panels



Blocked panels

## Exits/Egress

**Observation** The direction of travel to exits is not marked when not apparent (1910.37)

**Recommendation** If the direction of travel to the exit or exit discharge is not immediately apparent, post signs along the exit routes indicating the direction of travel to the nearest exit and exit discharge [reference 1910.37(b)(4)]. [View OSHA Standard](#)

Responsible Party: Maintenance Manager

**Observation** Emergency lights are not provided and/or not all functional (1910.37)

**Recommendation** Install emergency lighting as needed to ensure adequate lighting of all exit routes and doors during a power failure. Also, lighting should be tested monthly to ensure batteries are not dead or bulbs burned out. Repair/replace as needed [reference 1910.37(b)(1)]. [View OSHA Standard](#)

**Notes:** Need to inspect all emergency lights. At least two were found to not work when test button was depressed.

Responsible Party: Maintenance Manager

Photo(s)



Emergency lights not working when test button is depressed



Emergency lights not working above east door in warehouse

## Flammable Liquids

**Observation** More than 25 gallons of Category 1 flammable liquids are stored outside of approved storage cabinet or storage room (1910.106)

**Recommendation** *The quantity of Category 1 flammable liquids that may be located outside of an inside storage room or storage cabinet in a building or in any one fire area of a building shall not exceed 25 gallons. [reference 1910.106(e)(2)(ii)(b)(1)]* [View OSHA Standard](#)

Responsible Party: Maintenance Manager

Photo(s)



Flammable not being stored properly



Flammable not stored properly

## Grinders (Bench/Pedestal)

**Observation** The tongue guard is not adjusted to within 1/4 inch of wheel (1910.215)

**Recommendation** *Adjust (or install if missing) the tongue guard on grinders to within one-fourth inch of the wheel [reference 1910.215(b)(9)].* [View OSHA Standard](#)



Severity Rating: Moderate  
Responsible Party: Maintenance Manager

**Photo(s)**



Tongue guard missing



Guards missing on bench grinder

**Observation** **Bench/pedestal grinders are not all permanently mounted (1910.212)**

**Recommendation** *Make sure all equipment (i.e. bench or pedestal grinders) designed for a fixed location are securely anchored to prevent walking or moving [reference 1910.212(b)]. [View OSHA Standard](#)*

Severity Rating: Advisory  
Responsible Party: Maintenance Manager

**Photo(s)**



Grinder is not mounted to bench top

## Hazard Communication

**Observation** **Not all hazardous chemicals are properly labeled (1910.1200)**

**Recommendation** *Take steps to ensure that all hazardous chemical containers (original and secondary containers) are properly labeled. Labels must not be removed or defaced [reference 1910.1200(b)(3)(i)]. [View OSHA Standard](#)*

Responsible Party: Maintenance Manager

**Photo(s)**



Improper labeling



Improper labeling

## Housekeeping

**Observation** Not all work areas are kept clean and orderly (1910.141)

**Recommendation** *Take steps to ensure all places of employment are kept clean and organized to the extent that the nature of the work allows [reference 1910.141(a)(3)(i)]. [View OSHA Standard](#)*

**Photo(s)**



Poor housekeeping in warehouse



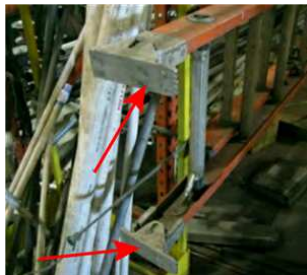
Housekeeping issue in electrical room

## Ladders (Portable)

**Observation** Step ladder(s) found with missing or damaged non-slip safety feet (1910.26)

**Recommendation** *Immediately remove from service any step ladder that has damaged or missing non-slip feet [reference 1910.26(a)(3)(vii)]. [View OSHA Standard](#)*

**Photo(s)**



Safety feet missing



## Machine Guards (General)

**Observation** Not all point-of-operation hazards are properly guarded (1910.212)

**Recommendation** *Install safeguards at the point of operation of machines to prevent employees from placing a body part in the danger zone during the operating cycle [reference 1910.212(a)(3)(ii)]. [View OSHA Standard](#)*

Responsible Party: Maintenance Manager

**Photo(s)**



Self-adjusting guard is bypassed

**Observation** Rotating parts hazards are not all properly guarded or shielded (1910.212)

**Recommendation** *Install guards or shields on machines to prevent placing a body part in the rotating parts hazard of a machine (i.e. chuck guard or shield on drill presses or lathes, fixed guard on rotating shaft, etc.) [reference 1910.212(a)(3)(ii)]. [View OSHA Standard](#)*

Responsible Party: Maintenance Manager

**Photo(s)**



Chuck guard needed on drill press

## Medical Services/First Aid

**Observation** Issues relating to Medical/First Aid standards (1910.151) were identified (see notes/photos for detail)

**Recommendation** *Review OSHA regulations on Medical Services/First Aid (1910.151) and adhere to applicable requirements in the standard. Reference comments, notes and/or photo(s) for details. [View OSHA Standard](#)*

**Notes:** Saline rinse bottles need to be inspected to ensure they are current/not expired.

Severity Rating: Advisory

Responsible Party: Warehouse Manager

**Photo(s)**



Saline rinse bottles are past expiration

## Storage

**Observation** **Materials are not all stored/stacked safely (1910.176)**

**Recommendation** *Materials in storage should be stacked, blocked, interlocked and limited in height so that they are stable and secure against sliding or collapse. Avoid leaning items on end unless secured to prevent them from falling over [reference 1910.176(b)]. [View OSHA Standard](#)*

Responsible Party: Warehouse Manager

**Photo(s)**



Product stored in warehouse needs to be banded or use shrink wrap when staking on top shelf.

## Tools (Hand & Power)

**Observation** **Tools are not all inspected and maintained in good condition (1910.242)**

**Recommendation** *Require employees to inspect and maintain tools and equipment in a safe condition. Tag and remove from service any damaged or defective tools until repairs can be made or discard if repairs are not possible [reference 1910.242(a)]. [View OSHA Standard](#)*

Responsible Party: Fabrication Manager, Maintenance Manager

**Photo(s)**



Damaged hammer



Damaged shaft on hammer

**Observation**

**All angle grinders are not properly guarded (1910.243)**

**Recommendation**

*Require use of safety guards on portable angle grinders and the guard must be located between the operator and the wheel during use [reference 1910.243(c)(3)]. [View OSHA Standard](#)*

Responsible Party: Fabrication Manager, Maintenance Manager

**Photo(s)**



Guard missing on angle grinder



Guard missing on grinder



Guard missing on grinder

## Welding, Cutting and Brazing

**Observation**

**Adequate ventilation is not provided for welding operations (1910.252)**

**Recommendation**

*Provide local exhaust or general ventilating systems to keep the amount of welding fumes below the maximum allowable concentration as specified in 1910.1000 [reference 1910.252(c)(1)(iii)]. [View OSHA Standard](#)*

**Notes:** Ventilation system in Maintenance Shop is suspect at best. Need IH to conduct testing to ensure proper ventilation is provided.

Responsible Party: Maintenance Manager

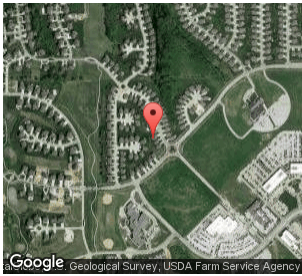
---

**Closing Comments:**

Several issues to address. Spoke to Tim regarding the results of this audit and he assured me steps will be taken to address deficiencies noted.


Submitted by:  
John Doe  
President/Owner  
Safety-Reports, Inc.  
(402) 403-6575  
johndoe1963@cox.net

*Observations and recommendations are purely advisory and based on practices and conditions observed and information provided at the time of this survey. They are not intended to include every loss or accident potential. It's the client's responsibility to make further observations and take whatever action that may be necessary to prevent losses, enforce safety procedures and eliminate hazardous conditions so as to comply with any federal, state, or local law, rule or regulation concerning safety and health.*



**Geo-Tag Information:**  
**Latitude:** 41.268366  
**Longitude:** -96.203879  
**Date:** 10/02/2016  
**Time:** 03:53 PM (central)

Inspection/report/audit verified by:

x   
\_\_\_\_\_  
Sunday, October 02, 2016 15:52:13 PM (central)