

SAFETY REPORTS

October 03, 2016

Steve Smith
Safety Director
Best Company
1234 Main Street
Kansas City, MO 64555

Re: Construction Safety Survey
Omaha, NE

Steve,

This report is in follow-up to the safety survey completed on October 02, 2016. The purpose of the survey was to identify potential safety hazards and/or OSHA violations. Bob Jones is the contact person at this location.

Attached, is a list of safety observations and recommendations based on conditions present at the time of my visit. If you have any questions or require additional information after reading this report, please don't hesitate to contact me.

Sincerely,

John Doe

John Doe
President/Owner
Safety-Reports, Inc.
Phone: (402) 403-6575
Email: johndoe1963@cox.net

CC: Bill Johnson
Tom Jackson

Observations and recommendations are purely advisory and based on practices and conditions observed and information provided at the time of this survey. They are not intended to include every loss or accident potential. It's the client's responsibility to make further observations and take whatever action that may be necessary to prevent losses, enforce safety procedures and eliminate hazardous conditions so as to comply with any federal, state, or local law, rule or regulation concerning safety and health.

Construction Report

Inspection Date: October 02, 2016
 Completed for: Best Company
 Report Name: Construction
 Location: Omaha, NE
 Contact: Bob Jones, Superintendent
 Project #: 12355
 Score: 70%
 Scope of Work: Safety Inspection

Categories with a checkmark in the "S" column are Satisfactory. Categories with a checkmark in the "U" column are Unsatisfactory and require additional attention (see notes). Categories not checked are considered not applicable or were not observed.

#	Category	S	U	#	Category	S	U	#	Category	S	U
1	Aerial/Boom Lifts		✓	16	Housekeeping		✓	31	Silica Exposure		
2	Asbestos			17	Ladders/Stairs		✓	32	Steel Erection		✓
3	Behaviors			18	Mechanized Equipment			33	Storage & Disposal		
4	Concrete/Masonry			19	Medical/FA Services			34	Tools (Hand & Power)	✓	
5	Confined Space			20	PPE		✓	35	Tools (Powder Actuated)		
6	Cranes		✓	21	Postings/Safety Signs			36	Traffic Control		
7	Demolition			22	Public Protection	✓		37	Trenching/Excavation		
8	Electrical Safety		✓	23	Rigging		✓	38	Trucks/Pickups/Autos		
9	Exits/Egress			24	Safety Training	✓		39	Truck/Trailer Combos (DOT)		
10	Fall Protection		✓	25	Sanitation			40	Welding & Cutting		
11	Fire Safety		✓	26	Scaffolds (Rolling/Baker)			41	Other/Misc.		✓
12	Forklifts			27	Scaffolds (Supported)		✓	42	Asbestos Remediation		
13	Fueling Operations		✓	28	Scaffolds (Suspension)			43			
14	Hazard Communication			29	Scaffolds (Pump Jack)			44			
15	Health Hazards			30	Scissor Lifts			45			

#	Category	Observations:
1	Aerial/Boom Lifts	Worker(s) observed standing on toeboard or rail of lift, did not keep both feet on floor of basket (1926.453) (See Photo) <i>Note: Worker observed with one foot on mid rail</i>
6	Cranes	Accessible areas within swing radius of crane are not barricaded to prevent workers from being struck or crushed (1926.1424) (See Photo) <i>Note: Radius guard is installed but not flagged per policy.</i>
8	Electrical Safety	Extension cord(s) in poor condition, i.e. worn or frayed (1926.416) (See Photo) <i>Note: Most cords were in good condition. This is the only cord found with damage.</i>
8	Electrical Safety	Cords not protected/kept clear of working spaces and walkways (1926.416) (See Photo) <i>Note: Remove cord or suspend it to keep out of water and pedestrian traffic.</i>
10	Fall Protection	The PFA System does not protect employee(s) from coming in contact with lower level

		(1926.502) (See Photo) <i>Note: Should be using a retractable. The 6 lanyard and choker not working.</i>
10	Fall Protection	Control lines are not erected at least 6 back feet from all unprotected/leading edges of low-sloped roofs during roofing activities (1926.502) (See Photo)
11	Fire Safety	Fire extinguishers not maintained in operating condition (1926.150) (See Photo) <i>Note: This fire extinguisher was discharged.</i>
11	Fire Safety	The travel distance to nearest fire extinguisher is not within 100 feet (1926.150) (See Photo)
13	Fueling Operations	Fuel tanks are not properly labeled/identified (NFPA 30) (See Photo) <i>Note: Not properly labeled. Need to contact fuel supplier to get this fixed.</i>
16	Housekeeping	Housekeeping is unacceptable/needs improvement (1926.25) (See Photo)
16	Housekeeping	Workers are exposed to scrap lumber with protruding nails (1926.25) (See Photo) <i>Note: Found several boards in scrap lumber pile with protruding nails.</i>
17	Ladders/Stairs	Ladder(s) not set up at proper angle (1926.1053) (See Photo) <i>Note: Ladder is sagging, needs to be placed at proper angle.</i>
17	Ladders/Stairs	Side rails are not secured to prevent side shift (1926.1053) (See Photo) <i>Note: Need to schedule meeting with subs to remind everyone that ladders need to be tied off.</i>
17	Ladders/Stairs	Handrail(s) are not provided as required on stairs with 4 or more risers (1926.1052) (See Photo)
20	PPE	Appropriate PPE is not always provided and/or used as required (1926.95) (See Photo)
23	Rigging	Not all rigging equipment is properly tagged/labeled with required markings (1926.251) (See Photo)
27	Scaffolds (Supported)	Scaffolds are not inspected and/or free of visible defects (1926.451) (See Photo) <i>Note: Scaffolding was inspected but not documented</i>
32	Steel Erection	Site layout is not properly graded, drained, and/or there's inadequate space for safe storage (1926.752) (See Photo) <i>Note: Lay down yard needs to be relocated or graded to remove water.</i>
41	Other/Misc.	Walking/working surfaces are not reasonably level and/or free of avoidable slip/trip/fall hazards such as deep ruts, large rocks, steep slopes, etc. (See Photo)

Closing Comments:

Issues of non-compliance were addressed with Bob prior to leaving the site.

Recommendations:

1) Aerial/Boom Lifts

- *When working from an aerial lift, employees must stand firmly on the floor of the basket and not be allowed to step or climb on toeboard or railing of basket or use planks, ladders or other devices for a work position [reference 1926.453(b)(2)(iv)]. [View OSHA Standard](#)*
 - Note: Worker observed with one foot on mid rail
 - Responsible Party: E.J. Erectors

2) Cranes

- *Make sure all accessible areas within swing radius of crane are barricaded to prevent workers from being struck or crushed [reference 1926.1424(a)]. [View OSHA Standard](#)*
 - Note: Radius guard is installed but not flagged per policy.
 -
 - Severity Rating: Advisory
 - Responsible Party: Master Construction

3) Electrical Safety

- *Inspect extension cords with each use and make sure worn or frayed electric cords are removed from service [reference 1926.416(e)(1)]. Ideally, damaged cords should be completely removed from the work area and tagged DO NOT USE or discarded. [View OSHA Standard](#)*
 - Note: Most cords were in good condition. This is the only cord found with damage.
 - Severity Rating: Moderate
 - Responsible Party: Best Contractor
- *Instruct workers to keep electrical cords reasonably clear of working spaces, walkways or similar areas to minimize trip/fall hazard and to protect cords from damage [reference 1926.416(b)(2)]. Consider re-routing cords away from active work areas or eliminating cords that are no longer needed. In some situations, it may be necessary to suspend cords or bury them in plastic conduit to protect them. [View OSHA Standard](#)*
 - Note: Remove cord or suspend it to keep out of water and pedestrian traffic.
 - Severity Rating: Minor
 - Responsible Party: Master Construction

4) Fall Protection

- *When using Personal Fall Arrest Systems to meet OSHA's six foot fall protection standard, the PFA system must be rigged such that the employee does not come in contact with the lower level [reference 1926.502(d)(16)(iii)]. [View OSHA Standard](#)*
 - Note: Should be using a retractable. The
 - 6 lanyard and choker not working.
 - Severity Rating: Critical
 - Contributing Factor: Training
 - Responsible Party: E.J. Erectors
- *When performing roofing activities, the control line shall be erected not less than 6 feet nor more than 25 feet from all unprotected or leading edges of roof surfaces [reference 1926.502(g)(1)(i)]. [View OSHA Standard](#)*
 - Responsible Party: Atta Boy Roofing

5) Fire Safety

- *Take steps to ensure all fire extinguishers used at the jobsite are fully charged and maintained in good operating condition [reference 1926.150(a)(4)]. Defective equipment should be immediately replaced. [View OSHA Standard](#)*
 - Note: This fire extinguisher was discharged.
 - Severity Rating: Moderate
 - Responsible Party: Drake's Drywall
- *The travel distance from any point of the protected area to the nearest fire extinguisher shall not exceed 100 feet of travel distance [reference 1926.150(c)(1)(i)]. Take appropriate steps to ensure an adequate number of working fire extinguishers are provided at the worksite to meet this requirement. [View OSHA Standard](#)*
 - Severity Rating: Moderate
 - Responsible Party: Atta Boy Roofing

6) Fueling Operations

- *Take steps to ensure fuel tanks are properly labeled and/or identified with fuel name stenciled on tank, flammable placards, etc. per requirements in NFPA 30 and/or applicable local/state codes.*
 - Note: Not properly labeled. Need to contact fuel supplier to get this fixed.
 -
 - Severity Rating: Advisory
 - Responsible Party: Panther Construction

7) Housekeeping

- *Take steps to ensure all work areas, passageways, and stairs are kept reasonably clean, orderly and free of scrap lumber, trash, debris, cords, etc. [reference 1926.25]. [View OSHA Standard](#)*
 - Severity Rating: Serious
 - Responsible Party: Best Contractor, Drake's Drywall
- *Scrap lumber with protruding nails shall be kept cleared from work areas, passageways, and stairs, in and around buildings or other structures [reference 1926.25(a)]. [View OSHA Standard](#)*
 - Note: Found several boards in scrap lumber pile with protruding nails.
 -
 - Responsible Party: Panther Construction, Stonewall Construction

8) Ladders/Stairs

- *Ladders must be set up at proper angle where the horizontal distance from the top support to the foot of ladder is approximately 1/4 of the working length of the ladder [reference 1926.1053(b)(5)(I)]. [View OSHA Standard](#)*
 - Note: Ladder is sagging, needs to be placed at proper angle.
 - Responsible Party: E.J. Erectors
- *Take appropriate steps to secure ladder side rails to a rigid support to prevent the ladder from slipping sideways [reference 1926.1053(b)(1)] [View OSHA Standard](#)*
 - Note: Need to schedule meeting with subs to remind everyone that ladders need to be tied off.

- Responsible Party: Best Contractor, E.J. Erectors
- *Stairways having four or more risers or rising more than 30 inches, whichever is less, shall be equipped with at least one handrail or two if both sides are open [reference 1926.1052(c)]. Provide handrails as required. [View OSHA Standard](#)*
 - Responsible Party: Columbia Plumbing

9) PPE

- *Provide appropriate PPE and/or require that PPE be used at each work site to protect employees against known hazards [reference 1926.95(a)]. [View OSHA Standard](#)*
 - Responsible Party: Columbia Plumbing

10) Rigging

- *Employers must ensure that all rigging equipment (i.e. slings, fastenings, attachments, etc.) has permanently affixed and legible identification markings as prescribed by the manufacturer that indicate the recommended safe working load. Rigging equipment shall not be used if markings are missing or illegible. [reference 1926.251(a)(2)(i) and (iii)] [View OSHA Standard](#)*
 - Responsible Party: Best Contractor

11) Scaffolds (Supported)

- *Scaffolds and components are to be inspected for visible defects before each work shift, and after any occurrence affecting a scaffold's structural integrity [reference 1926.451(f)(3)]. [View OSHA Standard](#)*
 - Note: Scaffolding was inspected but not documented
 - Responsible Party: Bricks Masonry

12) Steel Erection

- *The site layout must have a firm, properly graded and drained area with adequate space for the safe storage of materials and the safe operation of the erectors equipment [reference 1926.752(c)(2)]. [View OSHA Standard](#)*
 - Note: Lay down yard needs to be relocated or graded to remove water.
 - Responsible Party: E.J. Erectors

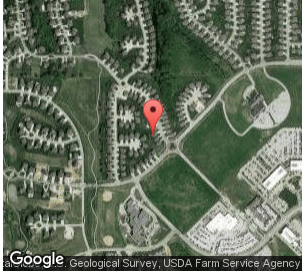
13) Other/Misc.

- *Take steps to maintain all work areas, frequently traveled pathways, entrances to and from the site, and other high travel areas reasonably level and free of slip, trip, fall hazards such as deep ruts, large rocks, steep slopes, etc. [Best Practice]*
 - Responsible Party: Master Construction

Submitted by:
 John Doe
 President/Owner
 Safety-Reports, Inc.
 (402) 403-6575

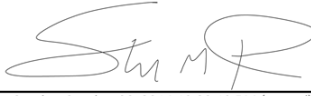
johndoe1963@cox.net

Observations and recommendations are purely advisory and based on practices and conditions observed and information provided at the time of this survey. They are not intended to include every loss or accident potential. It's the client's responsibility to make further observations and take whatever action that may be necessary to prevent losses, enforce safety procedures and eliminate hazardous conditions so as to comply with any federal, state, or local law, rule or regulation concerning safety and health.



Geo-Tag Information:
Latitude: 41.268366
Longitude: -96.203879
Date: 10/02/2016
Time: 07:22 PM (central)

Inspection/report/audit verified by:

x 
Sunday, October 02, 2016 19:22:19 PM (central)

Photo(s):

Workers have both feet on floor of lift



Ladder not secured to prevent side slip

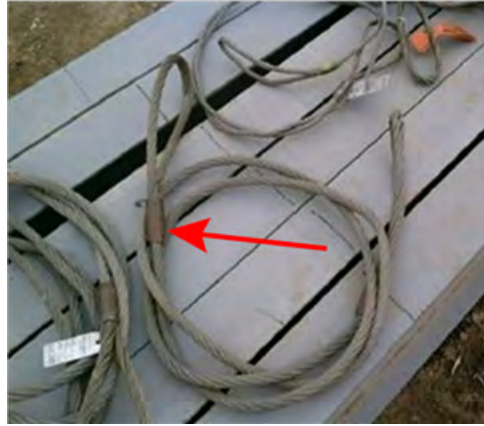


Need handrail on steps to storage trailer



Side rails not secured

Specification tag missing



Not wearing safety glasses or gloves



Need at least one fire extinguisher on roof



Damaged cord



Extremely poor houskeeping



Located near lay down area



Radius guard not installed.



Spec tags missing



South end of project near Master storage trailer.



South end of project near Master storage trailer.



South end of project near Master storage trailer.

Specification tag missing





Trip hazard, cords need to be rerouted.





No warning line erected on north end of roof.

