

SAFETY REPORTS

October 04, 2016

Steve Smith
Safety Director
Best Company
1234 Main Street
Kansas City, MO 64555

Re: Construction Safety Survey
Omaha, NE

Steve,

This report is in follow-up to the safety survey completed on October 02, 2016. The purpose of the survey was to identify potential safety hazards and/or OSHA violations. Bob Jones is the contact person at this location.

Attached, is a list of safety observations and recommendations based on conditions present at the time of my visit. If you have any questions or require additional information after reading this report, please don't hesitate to contact me.

Sincerely,

John Doe

John Doe
President/Owner
Safety-Reports, Inc.
Phone: (402) 403-6575
Email: johndoe1963@cox.net

Observations and recommendations are purely advisory and based on practices and conditions observed and information provided at the time of this survey. They are not intended to include every loss or accident potential. It's the client's responsibility to make further observations and take whatever action that may be necessary to prevent losses, enforce safety procedures and eliminate hazardous conditions so as to comply with any federal, state, or local law, rule or regulation concerning safety and health.

Construction Report

Completed for: Best Company
Report Name: Construction
Location: Omaha, NE
Contact: Bob Jones, Superintendent
Project #: 12355

Inspection Date: October 02, 2016

Scope of Work: Safety Inspection

Score: 70%

Observations

Aerial/Boom Lifts

Observation Workers in aerial lift are tied off to an approved anchorage point (1926.453)

Observation Only trained and/or authorized operators are allowed to use aerial lifts (1926.453)

Observation **Worker(s) observed standing on toeboard or rail of lift, did not keep both feet on floor of basket (1926.453)**

Recommendation *When working from an aerial lift, employees must stand firmly on the floor of the basket and not be allowed to step or climb on toeboard or railing of basket or use planks, ladders or other devices for a work position [reference 1926.453(b)(2)(iv)]. [View OSHA Standard](#)*

Notes: Worker observed with one foot on mid rail

Responsible Party: E.J. Erectors

Photo(s)



Workers have both feet on floor of lift

Observation Aerial lift is stationary when boom or basket is elevated with workers in it (1926.453)

Observation Lift is operated on level surface or per equipment manufacturers' specifications (ANSI/SIA A92.5)

Cranes

Observation Required safety devices (i.e. level indicator, boom/jib stops, stabilizer holding device/check valve, horn, etc.) are installed and maintained (1926.1415)

- Observation** Required operational aides (i.e. boom angle/radius indicator, boom/jib hoist limiting device, anti two-blocking device, etc.) are installed and maintained (1926.1416)
- Observation** A visual inspection by a competent person is completed each shift the equipment is used (1926.1412)
- Observation** Signals (hand, voice, audible, etc.) and means of transmitting signals to the operator (direct line of sight, video, radio, etc.) are established (1926.1419)
- Observation** **Accessible areas within swing radius of crane are not barricaded to prevent workers from being struck or crushed (1926.1424)**
- Recommendation** *Make sure all accessible areas within swing radius of crane are barricaded to prevent workers from being struck or crushed [reference 1926.1424(a)]. [View OSHA Standard](#)*

Notes: Radius guard is installed but not flagged per policy.

Severity Rating: Advisory

Responsible Party: Master Construction

Photo(s)



Radius guard not installed.

Electrical Safety

Observation GFCI is used for temporary power connections (1926.404)

Notes: Good use of GFCI

Photo(s)



Observation **Extension cord(s) in poor condition, i.e. worn or frayed (1926.416)**

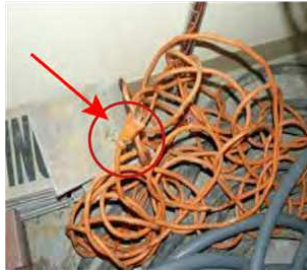
Recommendation *Inspect extension cords with each use and make sure worn or frayed electric cords are removed from service [reference 1926.416(e)(1)]. Ideally, damaged cords should be completely removed from the work area and tagged DO NOT USE or discarded. [View OSHA Standard](#)*

Notes: Most cords were in good condition. This is the only cord found with damage.

Severity Rating: Moderate

Responsible Party: Best Contractor

Photo(s)



Damaged cord

Observation

Cords not protected/kept clear of working spaces and walkways (1926.416)

Recommendation

Instruct workers to keep electrical cords reasonably clear of working spaces, walkways or similar areas to minimize trip/fall hazard and to protect cords from damage [reference 1926.416(b)(2)]. Consider re-routing cords away from active work areas or eliminating cords that are no longer needed. In some situations, it may be necessary to suspend cords or bury them in plastic conduit to protect them. [View OSHA Standard](#)

Notes: Remove cord or suspend it to keep out of water and pedestrian traffic.

Severity Rating: Minor

Responsible Party: Master Construction

Photo(s)



South end of project near Master storage trailer.

Observation

Electrical panels/circuits are effectively enclosed (1926.405)

Photo(s)



Observation

Proper clearance (minimum 3 ft.) is maintained in front of and around electrical equipment (1926.403, Table K-1)

Fall Protection

Observation Employees are protected from falls at unprotected sides/edges when working 6 feet or more above lower level (1926.501)

Photo(s)



Observation Guardrails are installed and maintained in good condition (1926.502)

Observation **The PFA System does not protect employee(s) from coming in contact with lower level (1926.502)**

Recommendation *When using Personal Fall Arrest Systems to meet OSHA's six foot fall protection standard, the PFA system must be rigged such that the employee does not come in contact with the lower level [reference 1926.502(d)(16)(iii)]. [View OSHA Standard](#)*

Notes: Should be using a retractable. The 6 lanyard and choker not working.

Severity Rating: Critical

Contributing Factor: Training

Responsible Party: E.J. Erectors

Photo(s)



Observation Floor hole covers are secured, capable of supporting 2x maximum load, and appropriately marked (1926.502)

Photo(s)



Observation **Control lines are not erected at least 6 back feet from all unprotected/leading edges**

of low-sloped roofs during roofing activities (1926.502)

Recommendation *When performing roofing activities, the control line shall be erected not less than 6 feet nor more than 25 feet from all unprotected or leading edges of roof surfaces [reference 1926.502(g)(1)(i)]. [View OSHA Standard](#)*

Responsible Party: Atta Boy Roofing

Photo(s)



No warning line erected on north end of roof.

Observation The warning line is flagged (at least every 6 feet) and suspended between 34 and 39 inches above the roof surface (1926.502)

Fire Safety

Observation **Fire extinguishers not maintained in operating condition (1926.150)**

Recommendation *Take steps to ensure all fire extinguishers used at the jobsite are fully charged and maintained in good operating condition [reference 1926.150(a)(4)]. Defective equipment should be immediately replaced. [View OSHA Standard](#)*

Notes: This fire extinguisher was discharged.

Severity Rating: Moderate

Responsible Party: Drake's Drywall

Photo(s)



Observation **The travel distance to nearest fire extinguisher is not within 100 feet (1926.150)**

Recommendation *The travel distance from any point of the protected area to the nearest fire extinguisher shall not exceed 100 feet of travel distance [reference 1926.150(c)(1)(i)]. Take appropriate steps to ensure an adequate number of working fire extinguishers are provided at the worksite to meet this requirement. [View OSHA Standard](#)*

Severity Rating: Moderate

Responsible Party: Atta Boy Roofing

Photo(s)



Need at least one fire extinguisher on roof

Observation

Only approved/UL listed fire extinguishers are provided (1926.150)

Observation

Flammable/combustible liquids are stored in approved/closed containers (1926.1520)

Photo(s)



Fueling Operations

Observation

Fuel tanks are not properly labeled/identified (NFPA 30)

Recommendation

Take steps to ensure fuel tanks are properly labeled and/or identified with fuel name stenciled on tank, flammable placards, etc. per requirements in NFPA 30 and/or applicable local/state codes.

Notes: Not properly labeled. Need to contact fuel supplier to get this fixed.

Severity Rating: Advisory

Responsible Party: Panther Construction

Photo(s)



Housekeeping

Observation **Housekeeping is unacceptable/needs improvement (1926.25)**

Recommendation *Take steps to ensure all work areas, passageways, and stairs are kept reasonably clean, orderly and free of scrap lumber, trash, debris, cords, etc. [reference 1926.25]. [View OSHA Standard](#)*

Severity Rating: Serious

Responsible Party: Best Contractor, Drake's Drywall

Photo(s)



Extremely poor housekeeping



Located near lay down area

Observation **Workers are exposed to scrap lumber with protruding nails (1926.25)**

Recommendation *Scrap lumber with protruding nails shall be kept cleared from work areas, passageways, and stairs, in and around buildings or other structures [reference 1926.25(a)]. [View OSHA Standard](#)*

Notes: Found several boards in scrap lumber pile with protruding nails.

Responsible Party: Panther Construction, Stonewall Construction

Photo(s)



Ladders/Stairs

Observation **Ladder(s) not set up at proper angle (1926.1053)**

Recommendation *Ladders must be set up at proper angle where the horizontal distance from the top support to the foot of ladder is approximately 1/4 of the working length of the ladder [reference 1926.1053(b)(5)(I)]. [View OSHA Standard](#)*

Notes: Ladder is sagging, needs to be placed at proper angle.

Responsible Party: E.J. Erectors

Photo(s)



Observation

Side rails are not secured to prevent side shift (1926.1053)

Recommendation

Take appropriate steps to secure ladder side rails to a rigid support to prevent the ladder from slipping sideways [reference 1926.1053(b)(1)] [View OSHA Standard](#)

Notes: Need to schedule meeting with subs to remind everyone that ladders need to be tied off.

Responsible Party: Best Contractor, E.J. Erectors

Photo(s)



Ladder not secured to prevent side slip



Side rails not secured

Observation

Handrail(s) are not provided as required on stairs with 4 or more risers (1926.1052)

Recommendation

Stairways having four or more risers or rising more than 30 inches, whichever is less, shall be equipped with at least one handrail or two if both sides are open [reference 1926.1052(c)]. Provide handrails as required. [View OSHA Standard](#)

Responsible Party: Columbia Plumbing

Photo(s)



Need handrail on steps to storage trailer

PPE

Observation **Appropriate PPE is not always provided and/or used as required (1926.95)**

Recommendation *Provide appropriate PPE and/or require that PPE be used at each work site to protect employees against known hazards [reference 1926.95(a)]. [View OSHA Standard](#)*

Responsible Party: Columbia Plumbing

Photo(s)



Not wearing safety glasses or gloves

Observation Hard hats are worn as required (1926.100)

Observation Appropriate hand protection is worn as required (1926.28)

Observation Appropriate safety footwear is worn as required (1926.28)

Observation Hearing protection is provided/used as required (1926.52)

Observation High-visibility clothing is worn as required (1926.28)

Observation Face protection is used when sawing, cutting, grinding, welding, etc. (1926.102)

Photo(s)



Public Protection

Observation Public exposure to airborne contaminants (dust/fumes/smoke) are adequately controlled (ANSI A10.34-2001 (R2012) Section 3.2.2)

Observation Controls are in place to protect the public where construction operations are near pedestrian/vehicular traffic (ANSI A10.34-2001 (R2012) Section 3.2.3)

Observation Areas where public is exposed to mobile equipment are barricaded/guarded (ANSI A10.34-2001 (R2012) Section 3.2.7.2)

Observation Barriers, enclosures, netting, etc. is used to protect public from falling/wind-borne objects (ANSI A10.34-2001 (R2012) Section 3.2.8)

Observation Measures are taken (i.e. fencing, signs, etc.) to restrict public access to jobsite (ANSI A10.34-2001 (R2012) Section 3.2.9)

Photo(s)



Observation Operations generating waste/debris are controlled to minimize exposure to adjacent areas (ANSI A10.34-2001 (R2012) Section 3.2.10)

Rigging

Observation Rigging equipment is maintained in good condition and damaged/defective equipment is removed from service (1926.251)

Observation **Not all rigging equipment is properly tagged/labeled with required markings (1926.251)**

Recommendation *Employers must ensure that all rigging equipment (i.e. slings, fastenings, attachments, etc.) has permanently affixed and legible identification markings as prescribed by the manufacturer that indicate the recommended safe working load. Rigging equipment shall not be used if markings are missing or illegible. [reference 1926.251(a)(2)(i) and (iii)]*
[View OSHA Standard](#)

Responsible Party: Best Contractor

Photo(s)



Specification tag missing

Spec tags missing

Specification tag missing

Observation Rigging equipment is used per manufacturer's specifications (Best Practice)

Observation Rigging equipment is properly stored when not in use (Best Practice)

Safety Training

Observation Toolbox talks are completed weekly per company policy (1926.21)

Photo(s)



Scaffolds (Supported)

Observation Legs/posts/frames/uprights are supported on base plates and mud sills (1926.451)

Photo(s)



Observation **Scaffolds are not inspected and/or free of visible defects (1926.451)**

Recommendation *Scaffolds and components are to be inspected for visible defects before each work shift, and after any occurrence affecting a scaffold's structural integrity [reference 1926.451(f)(3)]. [View OSHA Standard](#)*

Notes: Scaffolding was inspected but not documented

Responsible Party: Bricks Masonry

Photo(s)



Observation Ladder or approved means are provided/used to access platform (1926.451)

Observation Work platform is reasonably clean/free of excessive debris (1926.451)

Observation Scaffolds are not overloaded. Only materials/supplies needed for immediate operations are stored on scaffolds (1926.250)

Steel Erection

Observation Site layout is not properly graded, drained, and/or there's inadequate space for safe storage (1926.752)

Recommendation The site layout must have a firm, properly graded and drained area with adequate space for the safe storage of materials and the safe operation of the erectors equipment [reference 1926.752(c)(2)]. [View OSHA Standard](#)

Notes: Lay down yard needs to be relocated or graded to remove water.

Responsible Party: E.J. Erectors

Photo(s)



Observation Guardrails and toeboards are installed around structural openings such as stairs and elevator openings (1926.754)

Observation Tools, equipment, materials aloft when not in use are secured against accidental displacement (1926.759)

Photo(s)



Observation Perimeter safety cables are installed at all exterior/interior perimeters as soon as decking is finished (1926.760)

Observation Perimeter safety cables are flagged at 6 feet intervals with high-visibility material (1926.760)

Tools (Hand & Power)

Observation Hand and power tools are maintained in safe operating condition (1926.300)

Observation Power tools are either grounded (3-prong plug) or double-insulated (1926.302)

Observation Wooden handles are free of cracks/splinters and kept tight in tool (1926.301)

Other/Misc.

Observation **Walking/working surfaces are not reasonably level and/or free of avoidable slip/trip/fall hazards such as deep ruts, large rocks, steep slopes, etc.**

Recommendation *Take steps to maintain all work areas, frequently traveled pathways, entrances to and from the site, and other high travel areas reasonably level and free of slip, trip, fall hazards such as deep ruts, large rocks, steep slopes, etc. [Best Practice]*

Responsible Party: Master Construction

Photo(s)



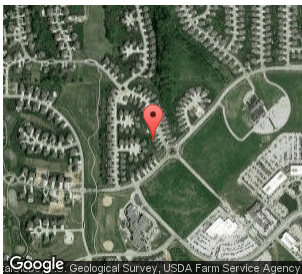
Trip hazard, cords need to be rerouted.

Closing Comments:

Issues of non-compliance were addressed with Bob prior to leaving the site.


Submitted by:
John Doe
President/Owner
Safety-Reports, Inc.
(402) 403-6575
johndoe1963@cox.net

Observations and recommendations are purely advisory and based on practices and conditions observed and information provided at the time of this survey. They are not intended to include every loss or accident potential. It's the client's responsibility to make further observations and take whatever action that may be necessary to prevent losses, enforce safety procedures and eliminate hazardous conditions so as to comply with any federal, state, or local law, rule or regulation concerning safety and health.



Geo-Tag Information:
Latitude: 41.268366
Longitude: -96.203879
Date: 10/02/2016
Time: 07:22 PM (central)

Inspection/report/audit verified by:

x 
Sunday, October 02, 2016 19:22:19 PM (central)