

SAFETY REPORTS

October 03, 2016

Steve Smith
Safety Director
Best Company
1234 Main Street
Kansas City, MO 64555

Re: Construction Safety Survey
Omaha, NE

Steve,

This report is in follow-up to the safety survey completed on October 02, 2016. The purpose of the survey was to identify potential safety hazards and/or OSHA violations. Bob Jones is the contact person at this location.

Attached, is a list of safety observations and recommendations based on conditions present at the time of my visit. If you have any questions or require additional information after reading this report, please don't hesitate to contact me.

Sincerely,

John Doe

John Doe
President/Owner
Safety-Reports, Inc.
Phone: (402) 403-6575
Email: johndoe1963@cox.net

CC: Bill Johnson
Tom Jackson

Observations and recommendations are purely advisory and based on practices and conditions observed and information provided at the time of this survey. They are not intended to include every loss or accident potential. It's the client's responsibility to make further observations and take whatever action that may be necessary to prevent losses, enforce safety procedures and eliminate hazardous conditions so as to comply with any federal, state, or local law, rule or regulation concerning safety and health.

Construction Report

Completed for: Best Company
 Report Name: Construction
 Location: Omaha, NE
 Contact: Bob Jones, Superintendent
 Project #: 12355

Inspection Date: October 02, 2016

Scope of Work: Safety Inspection

Score: 70%

Observations

Aerial/Boom Lifts	Yes	No
• Workers tied off to approved anchorage point in basket? 1926.453(b)(2)(v)	✓	
• Operator(s) trained and/or authorized? 1926.453(b)(2)(ii)	✓	
• Both feet on floor of basket? 1926.453(b)(2)(iv) (See Photo) <i>Note: Worker observed with one foot on mid rail</i>		✓
• Aerial lift stationary when elevated? 1926.453(b)(2)(viii)	✓	
• Operated on level surface per equipment specs? (ANSI/SIA A92.5)	✓	

Photo(s):



Workers have both feet on floor of lift

Cranes	Yes	No
• Required safety devices installed/maintained? 1926.1415	✓	
• Required operational aides installed/maintained? 1926.1416	✓	
• Visual inspection by competent person completed each shift? 1926.1412(d)	✓	
• Adequate communication between signal person & operator? 1926.1419	✓	
• Radius guard installed on crane? 1926.1424 (See Photo) <i>Note: Radius guard is installed but not flagged per policy.</i>		✓

Photo(s):



Radius guard not installed.

Electrical Safety

Yes No

- GFCI used for temporary power connections? 1926.404(b)(1)(ii) **(See Photo)** ✓
- **Extension cords not worn/frayed? 1926.416(e)(1) (See Photo)** ✓
Note: Most cords were in good condition. This is the only cord found with damage.
- **Cords protected/kept clear of work areas or walkways? 1926.416(b)(2) (See Photo)** ✓
Note: Remove cord or suspend it to keep out of water and pedestrian traffic.
- Electrical panels/circuits effectively enclosed? 1926.405(b)(2) **(See Photo)** ✓
- Proper clearance maintained in front of/around panels? (1926.403) ✓

Photo(s):



Damaged cord



South end of project near Master storage trailer.



Fall Protection	Yes	No
• Fall protection provided when working above 6 feet? 1926.501(b)(1) (See Photo)	✓	
• Guardrails installed/maintained in good condition? 1926.502(b)	✓	
• PFA rigged to prevent contact with lower surface? 1926.502(d)(16)(iii) (See Photo) <i>Note: Should be using a retractable. The 6 lanyard and choker not working.</i>		✓
• Floor hole covers secured, substantial, marked? 1926.502(i)(2)-(4) (See Photo)	✓	
• Control line 6 ft. from leading edge for roofing activities? 1926.502(g)(1)(i) (See Photo)		✓
• Warning line flagged and suspended at proper height? 1926.502(f)(2)(i)&(ii)	✓	

Photo(s):



No warning line erected on north end of roof.

Fire Safety	Yes	No
• Fire extinguishers in good condition/fully charged? 1926.150(a)(4) (See Photo) <i>Note: This fire extinguisher was discharged.</i>		✓
• Travel distance to fire extinguisher within 100 feet? 1926.150(c)(1)(i) (See Photo)		✓
• Approved/UL listed fire extinguishers provided? 1926.150(c)(1)(ix)	✓	
• Flammables stored in approved/closed containers? 1926.152(f)(1) (See Photo)	✓	

Photo(s):



Need at least one fire extinguisher on roof

Fueling Operations

Yes No

- **Fuel tanks properly labeled? NFPA 30 (See Photo)**
Note: Not properly labeled. Need to contact fuel supplier to get this fixed.

✓

Photo(s):



Housekeeping

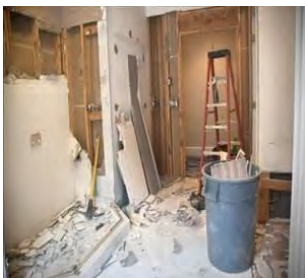
Yes No

- **Worksite reasonably organized/good housekeeping? 1926.25 (See Photo)**
- **No protruding nails on scrap lumber? 1926.25 (See Photo)**
Note: Found several boards in scrap lumber pile with protruding nails.

✓

✓

Photo(s):



Extremely poor housekeeping

Located near lay down area



Ladders/Stairs	Yes	No
<ul style="list-style-type: none"> Ladders set up at 4:1 angle? 1926.1053(b)(5)(I) (See Photo) <i>Note: Ladder is sagging, needs to be placed at proper angle.</i> Side rails secured (as needed) to prevent side slip? 1926.1053(b)(1) (See Photo) <i>Note: Need to schedule meeting with subs to remind everyone that ladders need to be tied off.</i> Handrails on stairs with 4 or more risers? 1926.1052(c) (See Photo) 		✓
		✓
		✓

Photo(s):



Ladder not secured to prevent side slip



Need handrail on steps to storage trailer



Side rails not secured



PPE	Yes	No
<ul style="list-style-type: none"> PPE provided/used as required? 1926.95(a) (See Photo) Hard hats worn as required? 1926.100(a) Hand protection worn when needed? 1926.28(a) 		✓
	✓	
	✓	

- Safety footwear worn as needed? 1926.28(a) ✓
- Hearing protection used as required? 1926.52(a) ✓
- High-visibility clothing worn as required? 1926.28(a) ✓
- Face protection used when required? 1926.102(a)(1) **(See Photo)** ✓

Photo(s):



Not wearing safety glasses or gloves

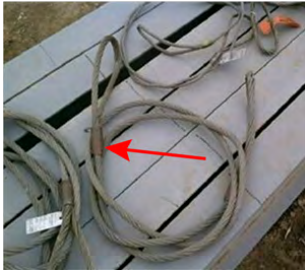
Public Protection	Yes	No
• Public exposure to airborne contaminants (dust/fumes/smoke) controlled? 3.2.2	✓	
• Construction operations near pedestrian/vehicular traffic controlled? 3.2.3	✓	
• Areas where public is exposed to mobile equipment are barricaded/guarded? 3.2.7.2	✓	
• Barriers, enclosures, netting used to protect public from falling/wind-borne objects? 3.2.8	✓	
• Measures taken to restrict public access to jobsite? 3.2.9 (See Photo)	✓	
• Operations generating waste/debris controlled to minimize exposure to adjacent areas? 3.2.10	✓	

Photo(s):



Rigging	Yes	No
• Damaged/defective rigging removed from service? 1926.251(a)(6)	✓	
• Rigging equipment properly tagged/labeled? 1926.251(a)(2)(i)(iii) (See Photo)		✓
• Rigging used per manufacturer's specifications? (Best Practice)	✓	
• Rigging equipment properly stored? (Best Practice)	✓	

Photo(s):



Specification tag missing



Spec tags missing



Specification tag missing

Safety Training

Yes No

- Toolbox talks completed weekly? 1926.21(b)(2) **(See Photo)**

✓

Photo(s):



Scaffolds (Supported)

Yes No

- Legs/frame bear on base plates/mud sills? 1926.451(c)(2) **(See Photo)**
- **Scaffolds inspected/free of defects? 1926.451(f)(3) (See Photo)**
Note: Scaffolding was inspected but not documented
- Ladder provided/used to access platform? 1926.451(e)(1)
- Platform clean/free of excessive debris? 1926.451(f)(13)
- Only materials needed stored on scaffold? 1926.250(b)(5)

✓

✓

✓

✓

✓

Photo(s):



Steel Erection

Yes No

- **Site layout graded, drained and adequate space? 1926.752(c)(2) (See**

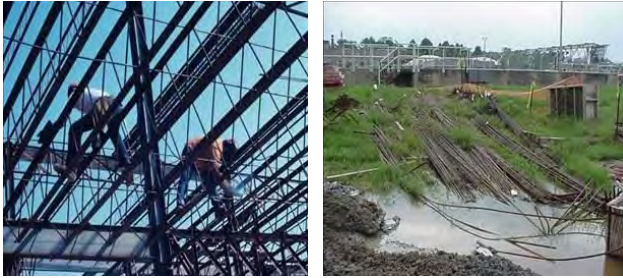
✓

Photo)

Note: Lay down yard needs to be relocated or graded to remove water.

- Guardrails/toeboards around structural openings? 1926.754(e)(2)(ii) ✓
- Tools aloft secured against accidental displacement? 1926.759(a) (See Photo) ✓
- Perimeter cables installed when decking completed? 1926.760(a)(2) ✓
- Perimeter cables flagged at 6 foot intervals? 1926.760 ✓

Photo(s):



Tools (Hand & Power)	Yes	No
• Hand and power tools in safe operating condition? 1926.300(a)(1)	✓	
• Power tools double-insulated or grounded? 1926.302(a)(1)	✓	
• Handles free of splinters/cracks and kept tight in tool? 1926.301(d)	✓	

Other/Misc.	Yes	No
• Surfaces reasonably level/free of slip/trip/fall hazards? (Best Practice) (See Photo)		✓

Photo(s):



Trip hazard, cords need to be rerouted.

Closing Comments:

Issues of non-compliance were addressed with Bob prior to leaving the site.

Recommendations:

1) Aerial/Boom Lifts

- *When working from an aerial lift, employees must stand firmly on the floor of the basket and not be allowed to step or climb on toeboard or railing of basket or use planks, ladders or other devices for a work position [reference 1926.453(b)(2)(iv)]. [View OSHA Standard](#)*
 - Note: Worker observed with one foot on mid rail
 - Responsible Party: E.J. Erectors

2) Cranes

- *Make sure all accessible areas within swing radius of crane are barricaded to prevent workers from being struck or crushed [reference 1926.1424(a)]. [View OSHA Standard](#)*
 - Note: Radius guard is installed but not flagged per policy.
 -
 - Severity Rating: Advisory
 - Responsible Party: Master Construction

3) Electrical Safety

- *Inspect extension cords with each use and make sure worn or frayed electric cords are removed from service [reference 1926.416(e)(1)]. Ideally, damaged cords should be completely removed from the work area and tagged DO NOT USE or discarded. [View OSHA Standard](#)*
 - Note: Most cords were in good condition. This is the only cord found with damage.
 - Severity Rating: Moderate
 - Responsible Party: Best Contractor
- *Instruct workers to keep electrical cords reasonably clear of working spaces, walkways or similar areas to minimize trip/fall hazard and to protect cords from damage [reference 1926.416(b)(2)]. Consider re-routing cords away from active work areas or eliminating cords that are no longer needed. In some situations, it may be necessary to suspend cords or bury them in plastic conduit to protect them. [View OSHA Standard](#)*
 - Note: Remove cord or suspend it to keep out of water and pedestrian traffic.
 - Severity Rating: Minor
 - Responsible Party: Master Construction

4) Fall Protection

- *When using Personal Fall Arrest Systems to meet OSHA's six foot fall protection standard, the PFA system must be rigged such that the employee does not come in contact with the lower level [reference 1926.502(d)(16)(iii)]. [View OSHA Standard](#)*
 - Note: Should be using a retractable. The
 - 6 lanyard and choker not working.
 - Severity Rating: Critical
 - Contributing Factor: Training
 - Responsible Party: E.J. Erectors
- *When performing roofing activities, the control line shall be erected not less than 6 feet nor more than 25 feet from all unprotected or leading edges of roof surfaces [reference 1926.502(g)(1)(i)]. [View OSHA Standard](#)*
 - Responsible Party: Atta Boy Roofing

5) Fire Safety

- *Take steps to ensure all fire extinguishers used at the jobsite are fully charged and maintained in good operating condition [reference 1926.150(a)(4)]. Defective equipment should be immediately replaced. [View OSHA Standard](#)*
 - Note: This fire extinguisher was discharged.
 - Severity Rating: Moderate
 - Responsible Party: Drake's Drywall
- *The travel distance from any point of the protected area to the nearest fire extinguisher shall not exceed 100 feet of travel distance [reference 1926.150(c)(1)(i)]. Take appropriate steps to ensure an adequate number of working fire extinguishers are provided at the worksite to meet this requirement. [View OSHA Standard](#)*
 - Severity Rating: Moderate
 - Responsible Party: Atta Boy Roofing

6) Fueling Operations

- *Take steps to ensure fuel tanks are properly labeled and/or identified with fuel name stenciled on tank, flammable placards, etc. per requirements in NFPA 30 and/or applicable local/state codes.*
 - Note: Not properly labeled. Need to contact fuel supplier to get this fixed.
 -
 - Severity Rating: Advisory
 - Responsible Party: Panther Construction

7) Housekeeping

- *Take steps to ensure all work areas, passageways, and stairs are kept reasonably clean, orderly and free of scrap lumber, trash, debris, cords, etc. [reference 1926.25]. [View OSHA Standard](#)*
 - Severity Rating: Serious
 - Responsible Party: Best Contractor, Drake's Drywall
- *Scrap lumber with protruding nails shall be kept cleared from work areas, passageways, and stairs, in and around buildings or other structures [reference 1926.25(a)]. [View OSHA Standard](#)*
 - Note: Found several boards in scrap lumber pile with protruding nails.
 -
 - Responsible Party: Panther Construction, Stonewall Construction

8) Ladders/Stairs

- *Ladders must be set up at proper angle where the horizontal distance from the top support to the foot of ladder is approximately 1/4 of the working length of the ladder [reference 1926.1053(b)(5)(I)]. [View OSHA Standard](#)*
 - Note: Ladder is sagging, needs to be placed at proper angle.
 - Responsible Party: E.J. Erectors
- *Take appropriate steps to secure ladder side rails to a rigid support to prevent the ladder from slipping sideways [reference 1926.1053(b)(1)] [View OSHA Standard](#)*
 - Note: Need to schedule meeting with subs to remind everyone that ladders need to be tied off.

- Responsible Party: Best Contractor, E.J. Erectors
- *Stairways having four or more risers or rising more than 30 inches, whichever is less, shall be equipped with at least one handrail or two if both sides are open [reference 1926.1052(c)]. Provide handrails as required. [View OSHA Standard](#)*
 - Responsible Party: Columbia Plumbing

9) PPE

- *Provide appropriate PPE and/or require that PPE be used at each work site to protect employees against known hazards [reference 1926.95(a)]. [View OSHA Standard](#)*
 - Responsible Party: Columbia Plumbing

10) Rigging

- *Employers must ensure that all rigging equipment (i.e. slings, fastenings, attachments, etc.) has permanently affixed and legible identification markings as prescribed by the manufacturer that indicate the recommended safe working load. Rigging equipment shall not be used if markings are missing or illegible. [reference 1926.251(a)(2)(i) and (iii)] [View OSHA Standard](#)*
 - Responsible Party: Best Contractor

11) Scaffolds (Supported)

- *Scaffolds and components are to be inspected for visible defects before each work shift, and after any occurrence affecting a scaffold's structural integrity [reference 1926.451(f)(3)]. [View OSHA Standard](#)*
 - Note: Scaffolding was inspected but not documented
 - Responsible Party: Bricks Masonry

12) Steel Erection

- *The site layout must have a firm, properly graded and drained area with adequate space for the safe storage of materials and the safe operation of the erectors equipment [reference 1926.752(c)(2)]. [View OSHA Standard](#)*
 - Note: Lay down yard needs to be relocated or graded to remove water.
 - Responsible Party: E.J. Erectors

13) Other/Misc.

- *Take steps to maintain all work areas, frequently traveled pathways, entrances to and from the site, and other high travel areas reasonably level and free of slip, trip, fall hazards such as deep ruts, large rocks, steep slopes, etc. [Best Practice]*
 - Responsible Party: Master Construction

Submitted by:
 John Doe
 President/Owner
 Safety-Reports, Inc.
 (402) 403-6575